


MultiConnect[®] Conduit™ IP67 Base Station Accessory Kit

This document illustrates how to connect the lightning arrester, cable, and antennas to the Base Station. Instructions for attaching the mounting bracket and mounting the Base Station are included with the Base Station and are also available at <http://www.multitech.net/developer/basestation>.

 **CAUTION:** Read all instructions and safety notices before starting installation. Safety notices are included in the MultiConnect Base Station Installation Guide. Do not connect power to the Base Station until directed to do so.

Package Contents

Item	Description	Quantity
1	Lightning Arrester	1
2	LoRa Antenna	1
3	4G Antenna	2

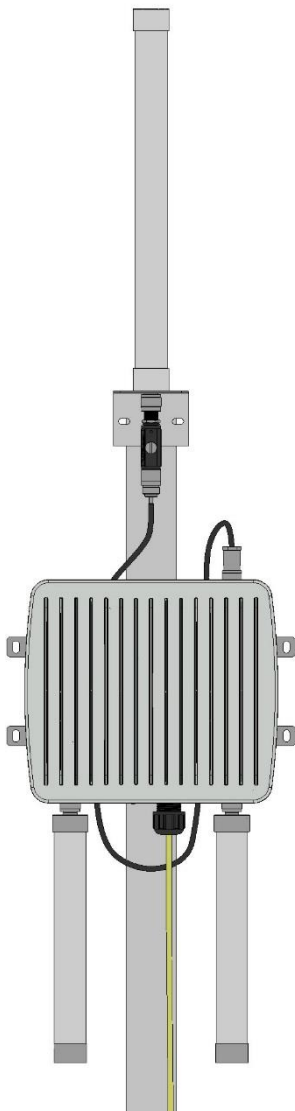
Item	Description	Quantity
4	5 ft Antenna Cable	1
5	Antenna Bracket	1
6	Installation Guide	1

NOTE: The lightning arrester comes with a bracket, which is not needed.

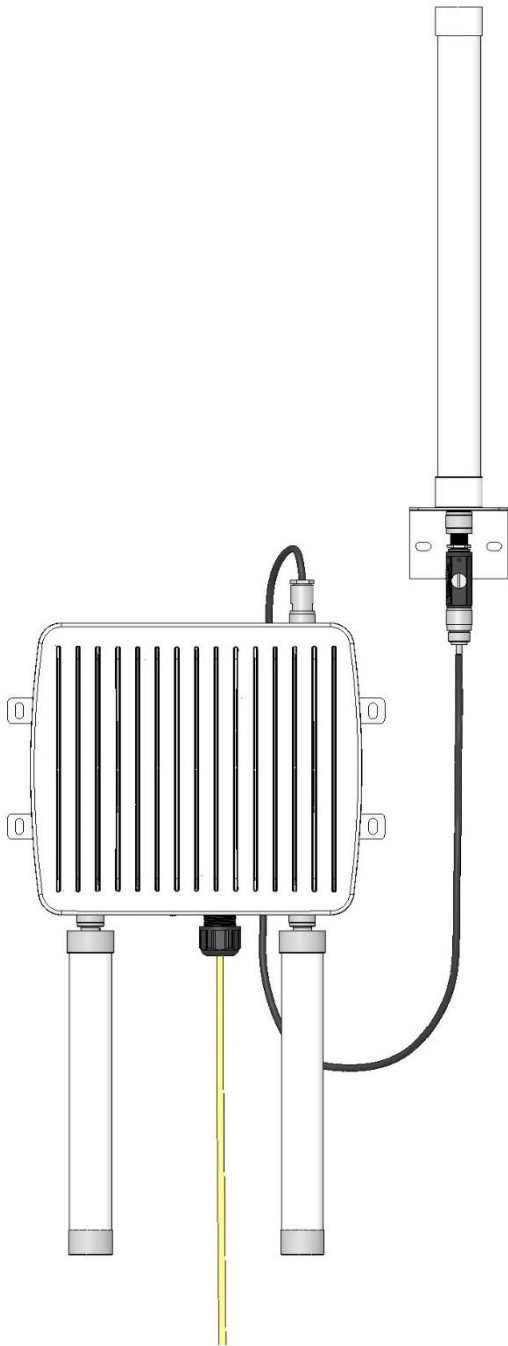
Attaching Accessories for a Pole Mounted Base Station

After mounting the Base Station on the pole:

1. Attach the antenna mounting bracket to the LoRa antenna.
2. Mount the antenna bracket to the pole so the top of the antenna bracket is at the top of the pole and antenna extends above the pole.
3. Attach the lightning arrester to LoRa antenna.
4. Attach the cable to the lightning arrester.
5. Attach the cable to the LoRa connector at the top of the Base Station.
6. Attach the 4G antennas to the Cell and Aux connectors on the Base Station.
7. Attach the Ethernet cable (not provided) to the device to supply power and Ethernet.



Attaching Accessories for a Wall Mounted Base Station



After mounting the Base Station on the wall:

1. Attach the antenna mounting bracket to the LoRa antenna.
2. Mount the antenna bracket to the wall.
3. Attach the lightning arrestor to LoRa antenna.
4. Attach the antenna cable to the lightning arrestor.
5. Attach the cable to the LoRa connector at the top of the Base Station.
6. Attach the 4G antennas to the Cell and Aux connectors on the Base Station.
7. Attach the Ethernet cable (not provided) to the device to supply power and Ethernet.